

## Ductboard Take Offs

Part #s: 10-01-040 and 10-01-050

Two-part system designed for use with UL181-listed ductboard material.

Duct Board Take Off Inside Extended: 10-01-040  
 Duct Board Take Off Outside Extended: 10-01-050

### SPECIFICATIONS

Available in one size, able to connect with 3" Ferrule (10-01-010), 4" Ferrule (20-01-010), or 45 Degree Elbow Extension (10-01-020).

#### Intended Use

Required for use with 1" ductboard manifold built to NAIMA's (North American Insulated Manufacturer's Association) Fibrous Glass Duct Construction Standards. The two-part system snap fits together creating a seal with the duct board. Additional sealing with tape or mastic is not required or recommended.

Ductboard Take Off Outside Extended (10-01-050) can be used with a sheet metal manifold. The part must be secured with four sheet metal screws and must be sealed to the manifold using a high performance silicone caulk.

#### Material

Flame retardant Polycarbonate / ABS blend.  
 Color: Black.  
 100% recyclable.

#### Installation

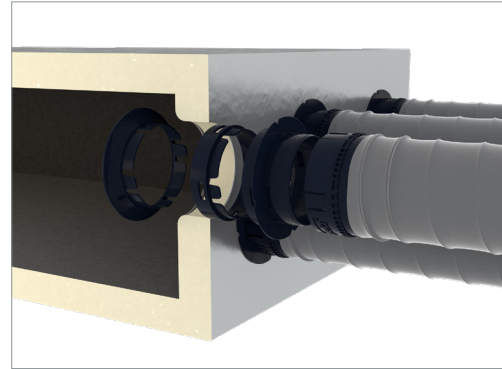
Follow Rheia's Installation Guidelines for detailed installation procedures and practices.

#### Listings

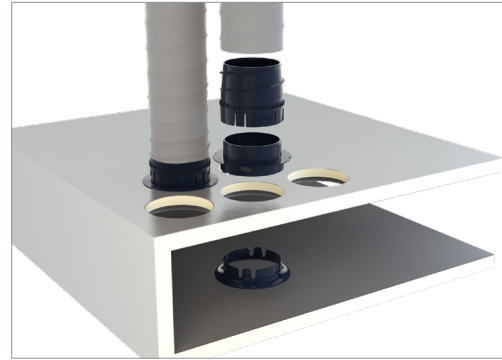
Manufactured with UL94 V-0 rated engineering thermoplastic.

#### Warranty

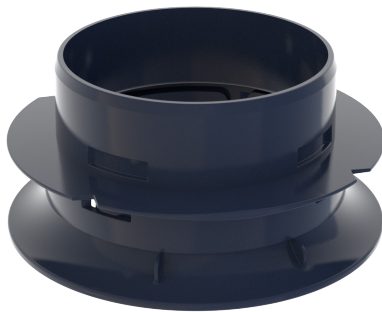
2-year limited warranty.  
 For warranty information go to [www.rheiacomfort.com/contact](http://www.rheiacomfort.com/contact).



Take Off assembly with 1" ductboard



Take Off assembly with 1" ductboard



Ductboard Take Off Inside and Outside

### DIMENSIONS

#### Part Dimensions:

Part #: 10-01-040  
 Diameter: 4.3" (109.2 mm)  
 Height: 1.0" (25.4 mm)

Part Weight: 0.05 lbs.

#### Part Dimensions:

Part #: 10-01-050  
 Diameter: 4.2" (106.7 mm)  
 Height: 1.6" (40.6 mm)

Part Weight: 0.05 lbs.