

Floor Boot 4x10 Assembly

Assembly Part # 10-01-280

For new construction floor installations only.
Attaches directly to the floor surface. Includes an adjustable damper blade.

SPECIFICATIONS

Must be used with Rheia-approved Floor 4x10 Diffusers that are not equipped with a balancing damper.

Intended Use

For installation into open web truss or I-joint floor systems. Floor boots complement the Rheia design providing a solution in applications where the Rheia supply duct cannot be run to a high-sidewall or pass-through boot.

Material

Floor Boot: Flame-retardant Polycarbonate /ABS blend.
Damper Blade: Flame-retardant Polycarbonate /ABS blend.
100% recyclable.

Installation

Follow Rheia's Installation Guidelines for detailed installation procedures and practices. Fasten the boot to the sub-floor with a minimum of four pan-head wood screws with a minimum length of 5/8". Follow recommendations for flush to sub floor installation. Only use the following approved floor diffuser. Failure to do so will affect the system's airflow performance.

Approved floor diffusers are:

Part #00-04-300. Color: White RAL9016

Part #00-04-300. Color: Beige Pantone 7531C

Part #00-04-300. Color: Grey: Pantone Cool Gray 6C

Sub-Floor Cut Out Guidelines

Sub-floor cut out maximum: 4 5/8" x 10 5/8" +/- 1/8"

Sub-floor cut out minimum: 4 3/8" x 10 3/8" +/- 1/8"

Listings

Manufactured with UL94 V-0 rated engineering thermoplastic.

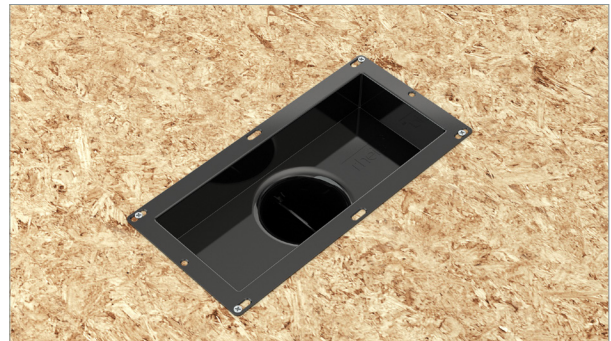
Warranty

2-year limited warranty.

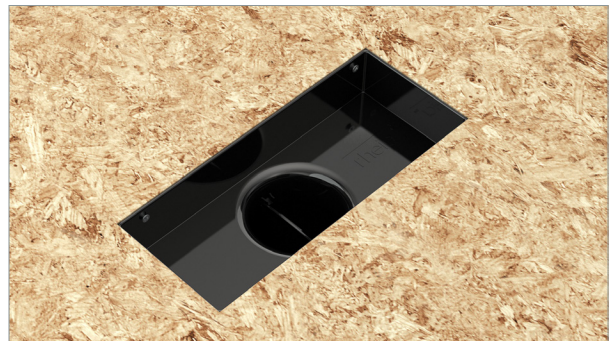
For warranty information go to www.rheiacomfort.com/contact.



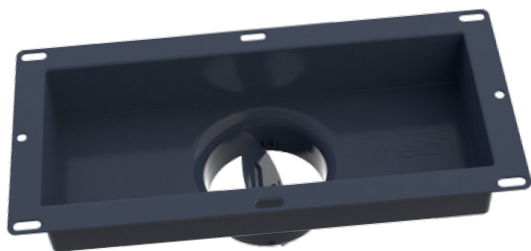
Floor Boot Assembly under mount



Floor Boot Assembly over mount



Floor Boot Assembly flush mount



Floor Boot Assembly with Damper

DIMENSIONS

Assembly Dimensions (with damper closed)

Length 11.6" (293.4" mm).

Width 5.6" (141.0" mm).

Height 3.1" (79.5" mm).

Part Weight: 0.46 lbs.