

## Coupler

Part #s: 10-01-030

The Coupler component is utilized when a duct run is extended or makes a tight bend, in which case a Coupler connects with Ferrules and/or elbows to complete the required assembly.

### SPECIFICATIONS

Couplers are part of the Rheia snap-fit system used to connect and seal components together, which is sufficiently air tight to not require additional sealing with tape or mastic. A fully assembled system will comply with industry standards for air leakage.

#### Intended Use

For use with 3" or 4" duct. The Coupler connects duct to other components of the Rheia system.

#### Material

Flame retardant Polycarbonate / ABS blend.

Color: Black.

100% recyclable.

#### Installation

Follow Rheia's Installation Guidelines for detailed installation procedures and practices.

#### Listings

UL 181C: Outline of Investigation for Non-Metal Joining Accessories for Flexible Air Ducts and Air Connectors (MH64419)

UL2043: Standard for Fire Test for Heat and Visible Smoke Release for Discrete Products and Their Accessories Installed in Air-Handling Spaces

Manufactured with UL94 V-0 rated engineering thermoplastic.

#### Warranty

2-year limited warranty.

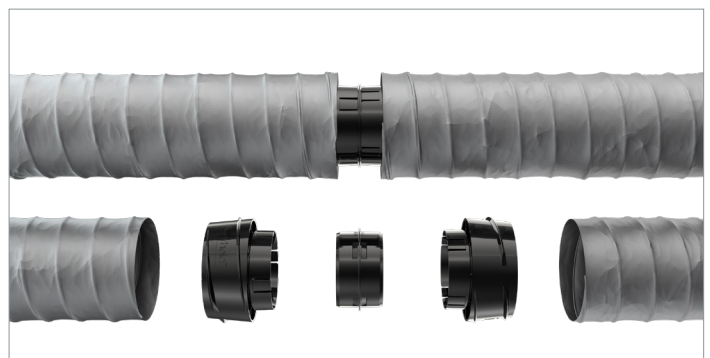
For warranty information go to [www.rheiacomfort.com/contact](http://www.rheiacomfort.com/contact).



Coupler application to extend 3" duct run



Coupler application to extend 3" to 4" duct run



Coupler application to extend 4" duct run



Coupler

### DIMENSIONS

#### Part Dimensions:

Part #: 10-10-030

Diameter: 3.5" (88.0 mm)

Height: 1.9" (48.4 mm)

Part Weight: 0.08 lbs.