

## Ceiling Diffusers

### Assembly Part #: 10-04-230, 10-04-260

Installed to Rheia Ceiling Boot Assembly #10-01-160.

No integrated airflow adjustment. Airflow balance is integrated into the Ceiling Boot Assembly: 10-01-220.

Use with a ceiling drywall thickness range of: 1/2" to 5/8".

### SPECIFICATIONS

Diffuser is available in two diameters:

Ceiling Diffuser Assembly: 6-inch diameter: **10-04-230**.

Ceiling Diffuser Assembly Small: 3-inch diameter: **10-04-260**.

#### Intended Use

For installation in ceilings or similar applications. The diffuser mounts to the Rheia Ceiling Boot Assembly (10-01-220) with a bayonet-style attachment, and can be easily removed for service or cleaning. The diffusers are dishwasher safe. When installed the diffusers are not required to be caulk sealed to the drywall.

6-inch diffuser for use in cooling dominated climates.

3-inch diffuser for use in heating dominated climates.

HVAC designer to use their discretion when specifying the diffuser size accounting for home type, size, configuration and applicable climate zone into account.

HVAC designer to use their discretion when specifying the diffuser location taking into account the required room airflow, throw, and interior framing and mechanical layout limitations.

#### Material

UV-stabilized ABS.

Color: White.

100% recyclable.

#### Installation

Follow Rheia's Installation Guidelines for detailed installation procedures and practices.

#### Listings

Manufactured with UL94 HB, UV-stabilized engineering thermoplastic.

#### Warranty

2-year limited warranty.

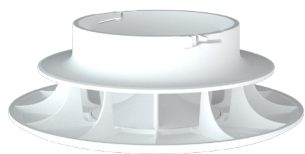
For warranty information go to [www.rheiacomfort.com/contact](http://www.rheiacomfort.com/contact).



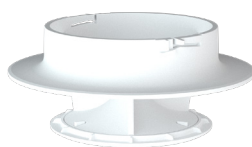
Ceiling Diffuser Assembly installed



Ceiling Diffuser Assembly Small installed



Ceiling Diffuser Assembly



Ceiling Diffuser Assembly Small

### DIMENSIONS

#### Assembly Dimensions:

Part Number: 10-04-230:

Diameter: 6.0" (150.2 mm)

Height: 2.04" (51.8 mm)

Part number: 10-04-260:

Diameter: 4.7" (120.0 mm)

Height: 2.06" (52.3 mm)

#### Assembly Weight:

Part Number: 10-04-230: 0.23 lbs.

Part number: 10-04-260: 0.14 lbs.