



Comfort **By Design**

# PRODUCT CATALOG

Spring 2024



## RHEIA AIR DISTRIBUTION TECHNOLOGY

Rheia is an innovative, engineered HVAC air distribution system providing a more comfortable home, that is efficient, cost-effective, and future code compliant.

This page intentionally left blank

# Table of Contents

---

SKU List . . . . . 4

Compliance Summary . . . . . 4

Shipping Information. . . . . 5

3" Ferrule. . . . . 6

4" Ferrule. . . . . 7

45-Degree Elbow Extension. . . . . 8

Coupler . . . . . 9

Ductboard Take-Off Inside Extended . . . . . 10

Ductboard Take-Off Outside Extended . . . . . 11

High Sidewall Boot 4x10 Assembly. . . . . 12

Pass-Through Boot Assembly. . . . . 13

Ceiling Boot Assembly. . . . . 14

Floor Boot 4x10 Assembly . . . . . 15

Ceiling Diffuser Assembly . . . . . 16

Ceiling Diffuser Small Assembly . . . . . 17

Slotted Diffuser V2. . . . . 18

Metal Floor Diffuser 4x10. . . . . 19

Hanger Bar Assembly . . . . . 20



# SKU List



## Compliance Summary

Rheia connector and distribution parts are manufactured from a UL-94 V-0 listed engineering thermoplastic.

The 3" and 4" Ferrule, Coupler, and Elbow are listed to UL2043. The 3" Ferrule, Coupler, and Elbow are listed to UL181C.

Rheia's wall and ceiling diffusers are UL94 HB rated, manufactured with a UV stabilized engineering thermoplastic.

The Rheia duct is uninsulated and manufactured with a highly-durable fiberglass fabric core. All Rheia ducts are UL181-listed Class 1 Air Ducts. Note: 3" and 4" r-8 insulated duct are also available.

Use Rheia-approved duct ONLY.

Use Rheia-approved floor diffusers ONLY. Use of non-approved diffusers will affect system performance and void the warranty.

### For more information

[www.rheiacomfort.com/contact](http://www.rheiacomfort.com/contact)

Rheia, LLC  
4636 S 35th Street, Suite 2  
Phoenix, AZ 85040

Part Number	Part/ Assembly Name
10-01-010	3" Ferrule
20-01-010	4" Ferrule
10-01-020	45 Degree Elbow Extension
10-01-030	Coupler
10-01-041	Duct Board Take Off Inside Extended
10-01-051	Duct Board Take Off Outside Extended
10-01-200	High Sidewall Boot Assembly
10-01-210	Pass Through Boot Assembly
10-01-220	Ceiling Boot Assembly
10-01-280	Floor Boot 4x10 Assembly
10-04-230	Ceiling Diffuser Assembly
10-04-260	Ceiling Diffuser Small Assembly
10-01-091	Slotted Diffuser V2
00-04-300	Metal Floor Diffuser 4x10 White
00-05-300	Metal Floor Diffuser 4x10 Beige
00-06-300	Metal Floor Diffuser 4x10 Grey
00-00-240	Hanger Bar Assembly
10-00-190	3" Duct Uninsulated ST-L (50FT lengths)
20-00-190	4" Duct Uninsulated ST-L (50FT lengths)
10-00-220	3" Duct Insulated R8 ST-L Core (25FT lengths)
20-00-220	4" Duct Insulated R8 ST-L Core (25FT lengths)



# Shipping Information

Part No.	Part/ Assembly Name	Per Case					Per Pallet				Per Truck
		Weight	Length	Width	Height	Qty	Pallet Type	Piece Qty	Case Qty	Weight*	Piece Qty
10-01-010	3" Ferrule	13.0	20.00"	12.00"	17.00"	80	SINGLE STACK	2,240	28	364.0	
20-01-010	4" Ferrule	16.0	20.00"	12.00"	17.00"	75	SINGLE STACK	2,100	28	448.0	
10-01-020	45 Degree Elbow Extension	13.0	20.00"	12.00"	17.00"	90	SINGLE STACK	2,520	28	364.0	
10-01-030	Coupler	15.0	20.00"	12.00"	17.00"	160	SINGLE STACK	4,480	28	420.0	
10-01-041	Duct Board Take Off Inside Extended	9.0	12.00"	12.00"	17.00"	132	SINGLE STACK	3,696	28	252.0	
10-01-051	Duct Board Take Off Outside Extended	13.0	20.00"	12.00"	17.00"	132	SINGLE STACK	3,696	28	364.0	
10-01-200	High Sidewall Boot Assembly	30.0	24.00"	20.00"	19.00"	50	SINGLE STACK	600	12	360.0	
10-01-210	Pass Through Boot Assembly	30.0	24.00"	20.00"	19.00"	48	SINGLE STACK	576	12	360.0	
10-01-220	Ceiling Boot Assembly	19.0	20.00"	12.00"	17.00"	90	SINGLE STACK	2,520	28	532.0	
10-01-280	Floor Boot 4x10 Assembly	19.5	22.50"	12.50"	20.00"	40	SINGLE STACK	960	24	468.0	
10-04-230	Ceiling Diffuser Assembly	16.0	20.00"	12.00"	17.00"	64	SINGLE STACK	1,792	28	448.0	20,160
10-04-260	Ceiling Diffuser Small Assembly	14.0	18.00"	14.00"	14.50"	90	SINGLE STACK	2,520	28	392.0	
10-04-091	Slotted Diffuser V2	14.0	20.00"	18.50"	6.00"	80	SINGLE STACK	2,560	32	448.0	
00-04-300	Metal Floor Diffuser 4x10 White	15.5	16.00"	12.00"	13.00"	20	SINGLE STACK	1,400	70	1,125.0	
00-05-300	Metal Floor Diffuser 4x10 Beige	15.5	16.00"	12.00"	13.00"	20	SINGLE STACK	1,400	70	1,125.0	
00-06-300	Metal Floor Diffuser 4x10 Grey	15.5	16.00"	12.00"	13.00"	20	SINGLE STACK	1,400	70	1,125.0	
00-00-240	Hanger Bar Assembly	36.5	15.75"	10.75"	10.50"	100	DOUBLE STACK	7,000	70	2,555.0	84,000
10-00-190	3" Duct Uninsulated ST-L (50FT lengths)	28.0	16.00"	16.00"	20.00"	6	SINGLE STACK	7,200	24	672.0	172,800
20-00-190	4" Duct Uninsulated ST-L (50FT lengths)	25.0	10.50"	22.00"	22.00"	6	SINGLE STACK	7,200	24	600.0	172,800
10-00-220	3" Duct Insulated R8 ST-L Core (25FT lengths)	12.5	11.75"	11.75"	30.00"	1	SINGLE STACK	900	36	450.0	21,600
20-00-220	4" Duct Insulated R8 ST-L Core (25FT lengths)	13.0	11.75"	11.75"	30.00"	1	SINGLE STACK	900	36	468.0	21,600

\* PALLET APPROX WEIGHT: 40LB. (Weight is not included above) PALLET SIZE: 40" X 48"



# 3" Ferrule

## Part #: 10-01-010

The 3" Ferrule connects to 3" duct to other components of the Rheia system. The component is designed to be interchangeable and connect with other components.

3-inch Ferrule: 10-01-010



3" Ferrule

## SPECIFICATIONS

Rheia Ferrule's are part of the Rheia snap-fit system used to connect and seal all components together, which is sufficiently air tight to not require additional sealing with tape or mastic. A fully assembled system complies with air leakage industry standards when installed correctly.

### Intended Use

For use with 3" Thermaflex S-TL duct. The threaded Ferrule connects the duct to other components of the Rheia system.

### Material

Flame retardant Polycarbonate / ABS blend.  
Color: Black.  
Recyclable.

### Installation

Follow Rheia's Installation Guidelines for detailed installation procedures and practices.

### Listings

UL 181C: Outline of Investigation for Non-Metal Joining Accessories for Flexible Air Ducts and Air Connectors (MH64419)

UL2043: Standard for Fire Test for Heat and Visible Smoke Release for Discrete Products and Their Accessories Installed in Air-Handling Spaces

Manufactured with UL94 V-0 rated engineering thermoplastic.

### Warranty

2-year limited warranty.  
For warranty information go to [www.rheiacomfort.com/contact](http://www.rheiacomfort.com/contact).

## DIMENSIONS

### Part Dimensions:

Part #: 10-01-010

Diameter: 3.4" (87.0mm), Height: 3.2" (80.0 mm)

Part Weight: 0.14 lbs.

# 4" Ferrule

## Part #: 20-01-010

The 4" Ferrule connects duct to other components of the Rheia system. Each component is designed to be interchangeable and connect with other components.

4-inch Ferrule: 20-01-010



4" Ferrule

## SPECIFICATIONS

Rheia Ferrules are part of the Rheia snap-fit system used to connect and seal all components together, which is sufficiently air tight to not require additional sealing with tape or mastic. A fully assembled system complies with air leakage industry standards when installed correctly.

### Intended Use

For use with 4" Thermaflex S-TL duct. The threaded Ferrule connects the duct to other components of the Rheia system.

### Material

Flame retardant Polycarbonate / ABS blend.  
Color: Black.  
Recyclable.

### Installation

Follow Rheia's Installation Guidelines for detailed installation procedures and practices.

### Listings

UL2043: Standard for Fire Test for Heat and Visible Smoke Release for Discrete Products and Their Accessories Installed in Air-Handling Spaces

Manufactured with UL94 V-0 rated engineering thermoplastic.

### Warranty

2-year limited warranty.  
For warranty information go to [www.rheiacomfort.com/contact](http://www.rheiacomfort.com/contact).

## DIMENSIONS

### Part Dimensions:

Part #: 20-01-011  
Diameter: 4.3" (109.2 mm), Height: 2.7" (68.5 mm)

Part Weight: 0.19 lbs.

# 45-Degree Elbow Extension

## Part #: 10-01-020

The 45-Degree Elbow Extension is used when a duct is required to make a tight bend, in which case one or two elbows will prevent compromised air flow in the duct. The elbow is designed to connect with other components. To ensure acceptable airflow, two elbows are used to make a 90 degree duct transition, when the inside radius of the duct transition is less than the diameter of the duct.



45-Degree Elbow Extension

## SPECIFICATIONS

Elbows are part of the Rheia snap-fit system used to connect and seal all components together, which is sufficiently air tight to not require additional sealing with tape or mastic. A fully assembled system complies with air leakage industry standards when installed correctly.

### Intended Use

For use with 3" or 4" duct. The 45-Degree Elbow Extension connects duct and components in various corner transitions. Building code requires the use of an elbow fitting when the inside radius of a duct is less than the diameter of the duct.

### Material

Flame retardant Polycarbonate / ABS blend.  
Color: Black.  
Recyclable.

### Installation

Follow Rheia's Installation Guidelines for detailed installation procedures and practices.

### Listings

UL 181C: Outline of Investigation for Non-Metal Joining Accessories for Flexible Air Ducts and Air Connectors (MH64419)

UL2043: Standard for Fire Test for Heat and Visible Smoke Release for Discrete Products and Their Accessories Installed in Air-Handling Spaces (

Manufactured with UL94 V-0 rated engineering thermoplastic.

### Warranty

2-year limited warranty.  
For warranty information go to [www.rheiacomfort.com/contact](http://www.rheiacomfort.com/contact).

## DIMENSIONS

### Part Dimensions:

Part #: 10-01-020  
Length: 4.1" (102.8 mm), Width: 3.1(79.5mm), Height: 3.8" (95.4 mm)

Part Weight: 0.13 lbs.



# Coupler

## Part #: 10-01-030

The Coupler component is utilized when a duct run is extended or makes a tight bend, in which case a Coupler connects with Ferrules and/or elbows to complete the required assembly.

## SPECIFICATIONS

Couplers are part of the Rheia snap-fit system used to connect and seal components together, which is sufficiently air tight to not require additional sealing with tape or mastic. A fully assembled system complies with air leakage industry standards when installed correctly.

### Intended Use

For use with 3" or 4" duct. The Coupler connects duct to other components of the Rheia system.

### Material

Flame retardant Polycarbonate / ABS blend.

Color: Black.

Recyclable.

### Installation

Follow Rheia's Installation Guidelines for detailed installation procedures and practices.

### Listings

UL 181C: Outline of Investigation for Non-Metal Joining Accessories for Flexible Air Ducts and Air Connectors (MH64419)

UL2043: Standard for Fire Test for Heat and Visible Smoke Release for Discrete Products and Their Accessories Installed in Air-Handling Spaces

Manufactured with UL94 V-0 rated engineering thermoplastic.

### Warranty

2-year limited warranty.

For warranty information go to [www.rheiacomfort.com/contact](http://www.rheiacomfort.com/contact).



Coupler

## DIMENSIONS

### Part Dimensions:

Part #: 10-01-030

Diameter: 3.5" (88.0 mm, Height: 1.9" (48.4 mm)

Part Weight: 0.08 lbs.

# Ductboard Take-Off Inside Extended

## Part #s: 10-01-041

Two-part system designed for use with UL181-listed ductboard material. Used in conjunction with Duct Board Take Off Outside Extended: 10-01-051

## SPECIFICATIONS

Available in one size, when assembled is able to connect with 3" Ferrule (10-01-010), 4" Ferrule (20-01-010), or 45 Degree Elbow Extension (10-01-020).

### Intended Use

Required for use with 1" or 1 1/2" ductboard manifold built to NAIMA's (North American Insulated Manufacturer's Association) Fibrous Glass Duct Construction Standards. The two-part system snap fits together creating a seal with the duct board. Additional sealing with tape or mastic is not required or recommended.

### Material

Flame retardant Polycarbonate / ABS blend.

Color: Black.

Recyclable.

### Installation

Follow Rheia's Installation Guidelines for detailed installation procedures and practices.

### Listings

Manufactured with UL94 V-0 rated engineering thermoplastic.

### Warranty

2-year limited warranty.

For warranty information go to [www.rheiacomfort.com/contact](http://www.rheiacomfort.com/contact).

## DIMENSIONS

### Part Dimensions:

Part #: 10-01-041

Diameter: 4.3" (109.3 mm), Height: 1.5" (38.0 mm)

Part Weight: 0.06 lbs.



Ductboard Take Off Inside Extended

# Ductboard Take-Off Outside Extended

## Part #s: 10-01-051

Two-part system designed for use with UL181-listed ductboard material. Used in conjunction with Duct Board Take Off Inside Extended: 10-01-041

## SPECIFICATIONS

Available in one size, when assembled is able to connect with 3" Ferrule (10-01-010), 4" Ferrule (20-01-010), or 45 Degree Elbow Extension (10-01-020).

### Intended Use

Required for use with 1" or 1 1/2" ductboard manifold built to NAIMA's (North American Insulated Manufacturer's Association) Fibrous Glass Duct Construction Standards. The two-part system snap fits together creating a seal with the duct board. Additional sealing with tape or mastic is not required or recommended.

NOTE: Ductboard Take Off Outside Extended (10-01-051) can be used with a sheet metal manifold. The part must be secured with four sheet metal screws and must be sealed to the manifold using a high performance silicone caulk.

### Material

Flame retardant Polycarbonate / ABS blend.  
Color: Black.  
Recyclable.

### Installation

Follow Rheia's Installation Guidelines for detailed installation procedures and practices.

### Listings

Manufactured with UL94 V-0 rated engineering thermoplastic.

### Warranty

2-year limited warranty.  
For warranty information go to [www.rheiacomfort.com/contact](http://www.rheiacomfort.com/contact).



Ductboard Take Off Outside Extended

## DIMENSIONS

### Part Dimensions:

Part #: 10-01-051  
Diameter: 4.4" (107.3 mm), Height: 2.1" (53.7 mm)

Part Weight: 0.09 lbs.

# High Sidewall Boot 4x10 Assembly

## Assembly Part # 10-01-200

For new construction wall installations only. Attaches to framing using the Rheia Hanger Bar Assembly (00-00-240), or via support blocking. Includes an adjustable damper blade. Must be used with Rheia-approved Slotted Wall Diffusers (10-04-090 or 10-04-091).

## SPECIFICATIONS

For installation in 2x4 or larger wall framing or steel stud framing.

### Intened Use

Stud spacing: Max. 24" o.c. Min. 16" o.c. (when using Hanger Bar)  
For optimum performance locate the center of the boot between 4 1/2" and 10" from the upper edge of the wall top plate.

### Material

High Sidewall Boot: Flame-retardant Polycarbonate /ABS blend.  
Damper Blade: Flame-retardant Polycarbonate /ABS blend.  
Damper Strap: Polypropylene.  
Recyclable.

### Installation

Follow Rheia's Installation Guidelines for detailed installation procedures and practices.  
When using the Rheia Hanger Bar, once the boot is correctly positioned, fasten the boot to the Hanger Bar using a sheet metal screw with a minimum length of 3/8".  
When mounting the High Sidewall boot directly to framing, use two pan-head wood screws with a minimum length of 5/8".

### Listings

Manufactured with UL94 V-0 rated engineering thermoplastic.

### Warranty

2-year limited warranty.  
For warranty information go to [www.rheiacomfort.com/contact](http://www.rheiacomfort.com/contact).

## DIMENSIONS

**Assembly Dimensions** (with damper closed)  
Length 6.2" (157.5 mm), Width 8.9" (225.3 mm),  
Height 7.2" (182.2 mm)

**Assembly Weight:** 0.47 lbs.



High Sidewall Boot Assembly

## PERFORMANCE DATA

Performance based on boot and diffuser assemblies together. Components include:

1. High Sidewall Boot Assembly - Rheia Part Number 10-01-200
2. Slotted Diffuser - Rheia Part Number 10-04-090
3. 3" Ferrule - Rheia Part Number 10-01-010

**Table 1:** High Sidewall Boot & Slotted Diffuser performance data

Neck velocity (fpm)	407	611	815	1018
Pressure drop (IWC)	0.012	0.026	0.044	0.067
Airflow (CFM)	20	30	40	50
Linear throw (feet)	0-4-8	4-9-12	6-10-17	8-15-17
Horizontal spread (feet)	1	2	4	4

Neck size 3" Dia.  
Diffuser size 8"x1-1/2"

Performance Data Notes:

1. Throw data is given in feet to terminal velocities of: 150 fpm (first shown) 100 fpm (middle shown) and 50 fpm (last shown).
2. Pressure drops given for the boot and diffuser assembly only without a damper installed. For additional pressure drops with the damper installed see Table 2.

**Table 2:** Damper position pressure drop

Airflow (CFM)	Damper Position				
	1 (Open)	2	3	4	5 (Closed)
20	0.006	0.028	0.078	0.232	0.443
30	0.013	0.061	0.168	0.501	0.957
40	0.023	0.106	0.290	0.865	1.653
50	0.035	0.162	0.444	1.322	2.525

Damper blade pressure drop (IWC)

# Pass-Through Boot Assembly

## Assembly Part # 10-01-210

For new construction wall installations only. Attaches to framing using the Rheia Hanger Bar Assembly (00-00-240), or via support blocking. Includes an adjustable damper blade. Must be used with Rheia-approved Slotted Wall Diffusers (10-04-090 or 10-04-091).



Pass-Through Boot Assembly

## SPECIFICATIONS

### Intended Use

For installation into 2x4 or larger wall framing or steel stud framing. Stud spacing: Max. 24" o.c. Min. 16" o.c. (when using Hanger Bar). For optimum performance locate the center of the boot between 4 1/2" and 10" from the upper edge of the wall top plate.

### Material

High Sidewall Boot: Flame-retardant Polycarbonate /ABS blend.  
Damper Blade: Flame-retardant Polycarbonate /ABS blend.  
Recyclable.

### Installation

Follow Rheia's Installation Guidelines for detailed installation procedures and practices. When using the Rheia Hanger Bar, once the boot is correctly positioned, fasten the boot to the Hanger Bar using a sheet metal screw with a minimum length of 3/8". When mounting the Pass Through Boot directly to framing, use two pan-head wood screws with a minimum length of 5/8".

### Listings

Manufactured with UL94 V-0 rated engineering thermoplastic.

### Warranty

2-year limited warranty.  
For warranty information go to [www.rheiacomfort.com/contact](http://www.rheiacomfort.com/contact).

## DIMENSIONS

**Assembly Dimensions** (with damper closed)  
Length 6.2" (157.5 mm), Width 9.1" (230 mm),  
Height 4.7" (120.5 mm)

**Assembly Weight:** 0.47 lbs.

## PERFORMANCE DATA

Performance based on boot and diffuser assemblies together. Components include:

1. Floor Boot 4x10 Assembly - Rheia Part Number 10-01-280
2. Metal Floor Diffuser 4x10 - Rheia Part Number 00-04-300
3. Elbow Extension - Rheia Part Number 10-01-020
4. 3" Ferrule - Rheia Part Number 10-01-010

**Table 1:** Pass Through Boot & Slotted Diffuser performance data

	Neck velocity (fpm)	407	611	815	1018
Neck size 3" Dia. Diffuser size 4"x10"	Pressure drop (IWC)	0.004	0.008	0.014	0.023
	Airflow (CFM)	20	30	40	50
	Linear throw (feet)	4-6-7	5-7-12	7-11-15	9-12-17

Performance Data Notes:

1. Throw is given in feet to terminal velocities of: 150 fpm (first) 100 fpm (middle) and 50 fpm (last).
2. Pressure drops given for the boot and diffuser assembly only without a damper installed. For additional pressure drops with the damper installed see Table 2.

**Table 2:** Damper position pressure drop

Airflow (CFM)	Damper Position					
	1 (Open)	2	3	4	5 (Closed)	
Damper blade pressure drop (IWC)	20	0.006	0.028	0.078	0.232	0.443
	30	0.013	0.061	0.168	0.501	0.957
	40	0.023	0.106	0.290	0.865	1.653
	50	0.035	0.162	0.444	1.322	2.525

# Ceiling Boot Assembly

## Assembly Part # 10-01-210

Attaches to framing using two Rheia Hanger Bar Assemblies (00-00-240), or via support blocking. Includes an adjustable damper blade. Must be used with Rheia-approved Ceiling Diffusers (10-04-230 or 10-04-260).

## SPECIFICATIONS

### Intended Use

For new construction ceiling installations only. For installation into I-joist, open web, and dimensional framing. Joist spacing: Max. 24" o.c. Min. 16" o.c. (when using Hanger Bars).

### Material

Ceiling Boot: Flame-retardant Polycarbonate /ABS blend.  
Damper Blade: Flame-retardant Polycarbonate /ABS blend.  
Recyclable.

### Installation

Follow Rheia's Installation Guidelines for detailed installation procedures and practices.  
When using the Rheia Hanger Bar, once the boot is correctly positioned, fasten the boot to a Hanger Bar using a sheet metal screw with a minimum length of 3/8".  
When mounting the Ceiling Boot directly to framing, use pan-head wood screws with a minimum length of 5/8".

### Listings

Manufactured with UL94 V-0 rated engineering thermoplastic.

### Warranty

2-year limited warranty.  
For warranty information go to [www.rheiacomfort.com/contact](http://www.rheiacomfort.com/contact).

## DIMENSIONS

**Assembly Dimensions** (with damper closed)  
Length 5.9" (148.8 mm), Width 1.8" (46.2 mm),  
Height 6.9" (174.4 mm)

**Assembly Weight:** 0.19 lbs.



Ceiling Boot Assembly

## PERFORMANCE DATA

Performance based on boot and diffuser assemblies together. Components include:

1. Ceiling Boot Assembly- Rheia Part Number 10-01-220
2. Ceiling Diffuser Assembly - Rheia Part Number 10-04-230 and Ceiling Diffuser Small Assembly - Rheia Part Number 10-04-260
3. Elbow Extension - Rheia Part Number 10-01-020
4. 3" Ferrule - Rheia Part Number 10-01-010

**Table 1:** Ceiling Boot with Ceiling Diffuser performance data

	407	611	815	1018
Neck velocity (fpm)	407	611	815	1018
Pressure drop (IWC)	0.010	0.023	0.039	0.060
Airflow (CFM)	20	30	40	50
360 deg. throw (feet)	0-1-3	1-2-4	2-3-4	2-3-5

**Table 2:** Ceiling Boot with Ceiling Diffuser Small performance data

	407	611	815	1018
Neck velocity (fpm)	407	611	815	1018
Pressure drop (IWC)	0.010	0.023	0.039	0.060
Airflow (CFM)	20	30	40	50
Vertical throw (feet)	3	5	7	9
Horizontal spread (feet)	1	2	2	3

Performance Data Notes:

1. Throw and spread is given in feet to terminal velocities of: 150 fpm (first) 100 fpm (middle) and 50 fpm (last).
2. Spread is the maximum width of the total air stream at the point of terminal velocity.
3. Pressure drops given for the boot and diffuser assembly only without a damper installed. For additional pressure drops with the damper installed see Table 2.

**Table 3:** Damper position pressure drop

Damper blade pressure drop (IWC)	Damper Position				
	1 (Open)	2	3	4	5 (Closed)
20	0.006	0.028	0.078	0.232	0.443
30	0.013	0.061	0.168	0.501	0.957
40	0.023	0.106	0.290	0.865	1.653
50	0.035	0.162	0.444	1.322	2.525



# Floor Boot 4x10 Assembly

## Assembly Part # 10-01-280

For new construction floor installations only.  
Attaches directly to the floor surface. Includes an adjustable damper blade.

### SPECIFICATIONS

Must be used with Rheia-approved Metal Floor Diffusers 4x10 that are not equipped with a balancing damper.

#### Intended Use

For installation into open web truss or I-joint floor systems. Floor boots complement the Rheia design providing a solution in applications where the Rheia supply duct cannot be run to a high-sidewall or pass-through boot.

#### Material

Floor Boot: Flame-retardant Polycarbonate /ABS blend.  
Damper Blade: Flame-retardant Polycarbonate /ABS blend.  
Recyclable.

#### Installation

Follow Rheia's Installation Guidelines for detailed installation procedures and practices. Fasten the boot to the sub-floor with a minimum of four pan-head wood screws with a minimum length of 5/8". Follow recommendations for flush to sub floor installation. Only use the following approved floor diffuser. Failure to do so will affect the system's airflow performance.

Approved floor diffusers are:

Part #00-04-300. Color: White RAL9016

Part #00-04-300. Color: Beige Pantone 7531C

Part #00-04-300. Color: Grey: Pantone Cool Gray 6C

#### Sub-Floor Cut Out Guidelines

Sub-floor cut out maximum: 4 5/8" x 10 5/8" +/- 1/8"

Sub-floor cut out minimum: 4 3/8" x 10 3/8" +/- 1/8"

#### Listings

Manufactured with UL94 V-0 rated engineering thermoplastic.

#### Warranty

2-year limited warranty.

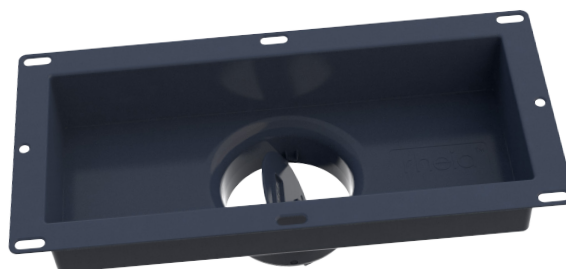
For warranty information go to [www.rheiacomfort.com/contact](http://www.rheiacomfort.com/contact).

### DIMENSIONS

#### Assembly Dimensions (with damper closed)

Length 11.6" (293.4 mm), Width 5.6" (141.0 mm),  
Height 3.1" (79.5 mm).

**Part Weight:** 0.46 lbs.



Floor Boot 4x10 Assembly

### PERFORMANCE DATA

Performance based on boot and diffuser assemblies together. Components include:

1. Floor Boot 4x10 Assembly - Rheia Part Number 10-01-280
2. Metal Floor Diffuser 4x10 - Rheia Part Number 00-04-300
3. Elbow Extension - Rheia Part Number 10-01-020
4. 3" Ferrule - Rheia Part Number 10-01-010

**Table 1:** Floor Boot with Metal Floor Diffuser Performance Data

Neck velocity (fpm)	407	611	815	1018
Pressure drop (IWC)	0.012	0.026	0.044	0.067
Airflow (CFM)	20	30	40	50
Vertical throw (feet)	1	5	5	6
Horizontal spread (feet)	0	2	4	4

Neck size: 3" Dia.  
Diffuser size: 4"x10"

Performance Data Notes:

1. Throw and spread is given in feet to terminal velocity of 50 fpm.
2. Spread is the maximum width of the total air stream at the point of terminal velocity.
3. Pressure drops given for the boot and diffuser assembly only without a damper installed. For additional pressure drops with the damper installed see Table 2.

**Table 2:** Damper position pressure drop

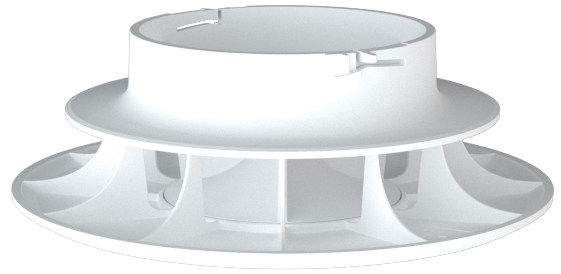
Airflow (CFM)	Damper Position				
	1 (Open)	2	3	4	5 (Closed)
20	0.006	0.028	0.078	0.232	0.443
30	0.013	0.061	0.168	0.501	0.957
40	0.023	0.106	0.290	0.865	1.653
50	0.035	0.162	0.444	1.322	2.525

Damper blade pressure drop (IWC)

# Ceiling Diffuser Assembly

## Assembly Part #: 10-04-230

Installed to Rheia Ceiling Boot Assembly #10-01-160.  
 No integrated airflow adjustment. Airflow balance is integrated into the Ceiling Boot Assembly: 10-01-220.  
 Use with a ceiling drywall thickness range of: 1/2" to 5/8".  
 Ceiling diffusers are available in 3" and 6" diameters.  
 Ceiling Diffuser: 6-inch diameter: 10-04-230.



Ceiling Diffuser Assembly

## SPECIFICATIONS

### Intended Use

For installation in ceilings or similar applications. The diffuser mounts to the Rheia Ceiling Boot Assembly (10-01-220) with a bayonet-style attachment, and can be removed for service or cleaning. The diffusers are dishwasher safe. When installed the diffusers are not required to be caulk-sealed to the drywall.

6-inch diffuser for use in cooling dominated climates.

HVAC designer to use their discretion when specifying the diffuser size accounting for home type, size, configuration and applicable climate zone into account.

HVAC designer to use their discretion when specifying the diffuser location taking into account the required room airflow, throw, and interior framing and mechanical layout limitations.

### Material

UV-stabilized ABS.  
 Color: White.  
 Recyclable.

### Installation

Follow Rheia's Installation Guidelines for detailed installation procedures and practices.

### Listings

Manufactured with UL94 HB, UV-stabilized engineering thermoplastic.

### Warranty

2-year limited warranty.  
 For warranty information go to [www.rheiacomfort.com/contact](http://www.rheiacomfort.com/contact).

## DIMENSIONS

### Assembly Dimensions:

Part Number: 10-04-230:  
 Diameter: 6.0" (150.2 mm), Height: 2.04" (51.8 mm)

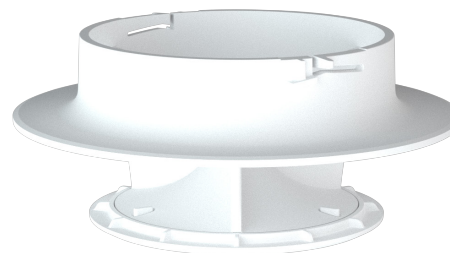
Assembly Weight: 0.23 lbs.



# Ceiling Diffuser Small Assembly

## Assembly Part #: 10-04-260

Installed to Rheia Ceiling Boot Assembly #10-01-160.  
 No integrated airflow adjustment. Airflow balance is integrated into the Ceiling Boot Assembly: 10-01-220.  
 Use with a ceiling drywall thickness range of: 1/2" to 5/8".  
 Ceiling diffusers are available in 3" and 6" diameters.  
 Ceiling Diffuser Small: 3-inch diameter: 10-04-260.



Ceiling Diffuser Small Assembly

## SPECIFICATIONS

### Intended Use

For installation in ceilings or similar applications. The diffuser mounts to the Rheia Ceiling Boot Assembly (10-01-220) with a bayonet-style attachment, and can be removed for service or cleaning. The diffusers are dishwasher safe. When installed the diffusers are not required to be caulk-sealed to the drywall.

3-inch diffuser for use in heating dominated climates.

HVAC designer to use their discretion when specifying the diffuser size accounting for home type, size, configuration and applicable climate zone into account.

HVAC designer to use their discretion when specifying the diffuser location taking into account the required room airflow, throw, and interior framing and mechanical layout limitations.

### Material

UV-stabilized ABS.  
 Color: White.  
 Recyclable.

### Installation

Follow Rheia's Installation Guidelines for detailed installation procedures and practices.

### Listings

Manufactured with UL94 HB, UV-stabilized engineering thermoplastic.

### Warranty

2-year limited warranty.  
 For warranty information go to [www.rheiacomfort.com/contact](http://www.rheiacomfort.com/contact).

## DIMENSIONS

### Assembly Dimensions:

Part number: 10-04-260:  
 Diameter: 4.7" (120.0 mm), Height: 2.06" (52.3 mm)

**Assembly Weight:** 0.14 lbs.

# Slotted Diffuser V2

## Assembly Part #: 10-04-091

Must be used with Rheia High Sidewall Boot part #10-01-200 or Rheia Pass-through Boot part #10-01-210.

No integrated airflow adjustment. Airflow balance is integrated into boot assemblies: 10-01-200 & 10-01-210. Use with a ceiling drywall thickness range of: 1/2" to 5/8".

## SPECIFICATIONS

Diffuser is available in one size with a 1.5" x 9" free opening area.

### Intended Use

For installation in walls or similar applications. The diffuser mounts to the Rheia slotted boots with an integrated click-fit attachment, and can be removed for service or cleaning. The diffuser is dishwasher safe. When installed the diffuser is not required to be sealed to the drywall.

HVAC designer to use their discretion when specifying the diffuser location taking into account the required room airflow, throw, and interior framing and mechanical layout limitations.

### Material

UV-stabilized ABS.  
Color: White.  
Recyclable.

### Installation

Follow Rheia's Installation Guidelines for detailed installation procedures and practices.

### Listings

Manufactured with UL94 HB, UV-stabilized engineering thermoplastic.

### Warranty

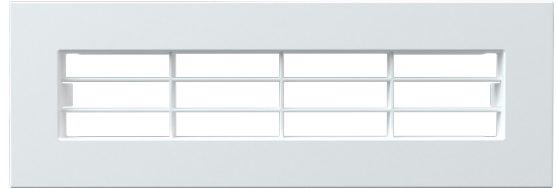
2-year limited warranty.  
For warranty information go to [www.rheiacomfort.com/contact](http://www.rheiacomfort.com/contact)

## DIMENSIONS

### Part Dimensions:

Length: 1.2" (31.6 mm), Width: 9.9" (251 mm), Height: 3.4" (86.1 mm)

Part Weight: 0.15 lbs.



Slotted Diffuser V2

# Metal Floor Diffuser 4x10

Part #s: 00-04-300, 00-05-300, 00-06-300

Metal Floor Diffuser 4x10 is available in three color options, the diffuser is equipped without an adjustable damper to ensure proper balancing of the Rheia system.

## SPECIFICATIONS

Available in one size to fit standard rough opening of 4" x 10".

### Intended Use

For use with Rheia Floor Boot Assembly (10-01-280) only. Do not substitute with a floor diffuser equipped with adjustable baffles as this will significantly compromise airflow balance preventing the system from operating as designed. Not for installation in walls or ceilings.

### Material

Painted Steel.

Colors:

White: 00-04-300

Beige: 00-05-300

Grey: 00-06-300

Recyclable.

### Installation

Follow Rheia's Installation Guidelines for detailed installation procedures and practices.

### Warranty

2-year limited warranty.

For warranty information go to [www.rheiacomfort.com/contact](http://www.rheiacomfort.com/contact).

## DIMENSIONS

### Part Dimensions:

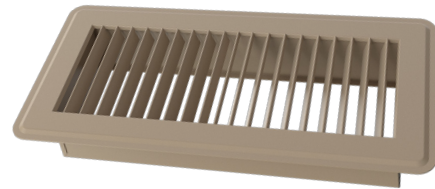
Length: 15.4" (392 mm), Width: 9.9" (13.6 mm),

Height: 3.4" (44.4 mm)

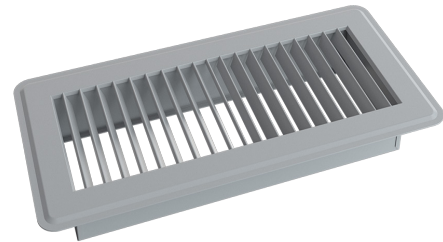
Part Weight: 0.36 lbs.



Metal Floor Diffuser 4x10 White



Metal Floor Diffuser 4x10 Beige



Metal Floor Diffuser 4x10 Grey

# Hanger Bar Assembly

## Assembly Part #: 00-00-240

Supports the installation of wall and ceiling boots.  
Adjustable design allows installation within framed wall cavities, ceiling cavities, and bulkheads with o.c. spacing between 12" and 24".

## SPECIFICATIONS

Hanger Bar Assembly is adjustable and is available in one size.

### Intended Use

Used with all boot installations where required. Compatible with these assemblies:

- 10-01-200: High Sidewall Boot Assembly
- 10-01-210: Pass Through Boot Assembly
- 10-01-220: Ceiling Boot Assembly

Attach to wood framing using 5/8" pan head wood screws. Attach to steel framing using recommended sheet metal screws.

### Material

Galvanized Steel  
Color: Natural.  
Recyclable.

### Installation

Follow Rheia's Installation Guidelines for detailed installation procedures and practices.

### Warranty

2-year limited warranty.  
For warranty information go to [www.rheiacomfort.com/contact](http://www.rheiacomfort.com/contact).

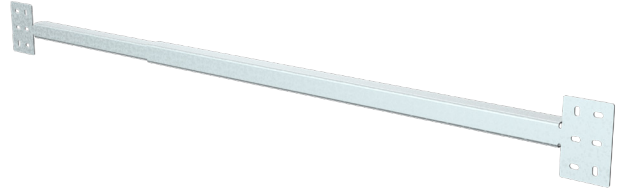
## DIMENSIONS

### Part Dimensions:

Length: 15.4" (392 mm), Width: 9.9" (13.6 mm),  
Height: 3.4" (44.4 mm)

Maximum Extension: 26.5" (673.1 mm)

Assembly Weight: 0.36 lbs.



Hanger Bar Assembly